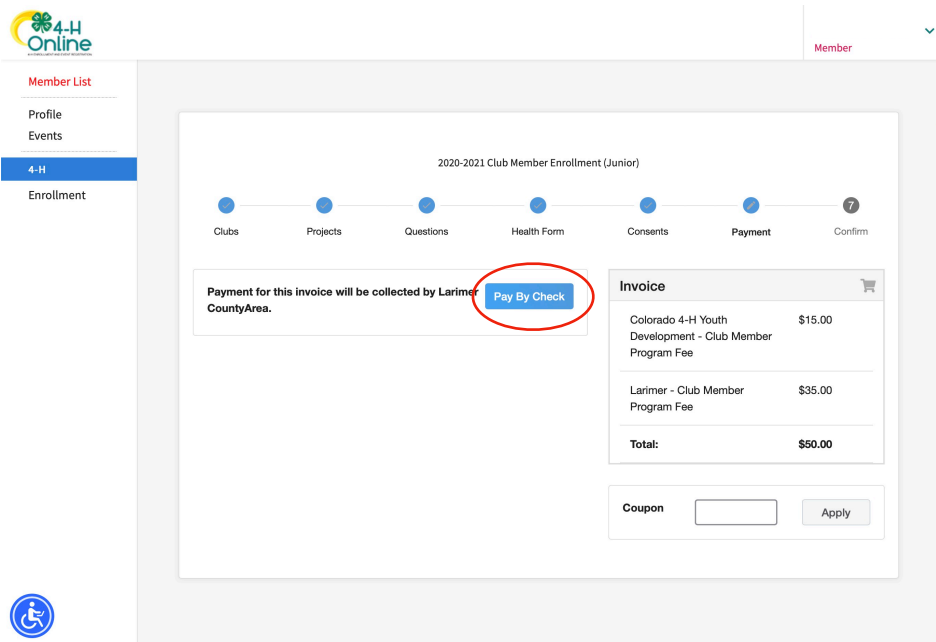
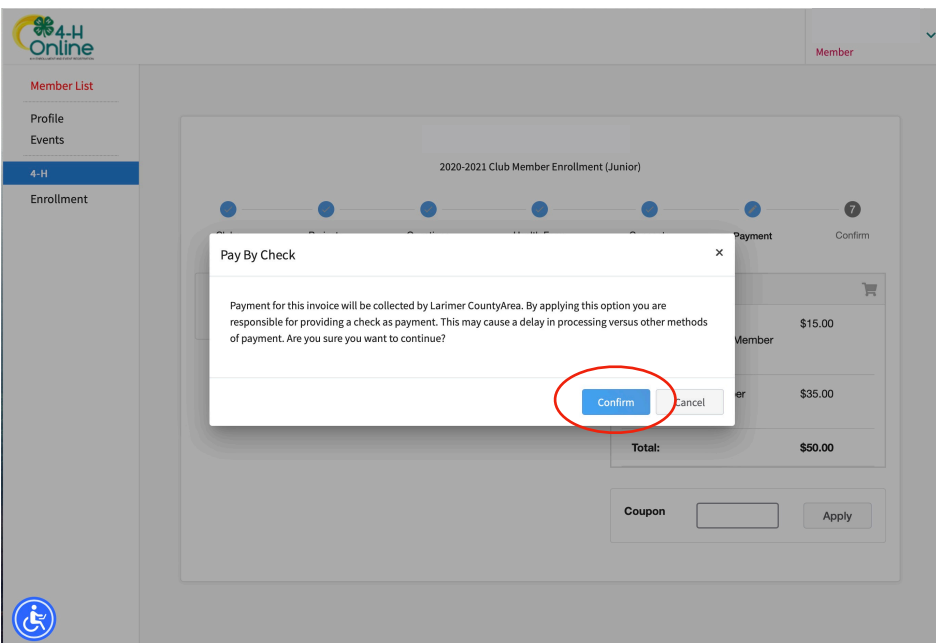


**Step 1:** Click “Show Payment Options.”



**Step 2:** Click “Pay by Check.” Regardless of whether you’re sending a check or using PayPal on the Larimer County Extension Office website. This tells the site you’re submitting payment directly to Larimer County 4-H.



**Step 3:** Confirm.

Member List

Profile

Events

4-H

Enrollment

2020-2021 Club Member Enrollment (Junior)

Clubs   Projects   Questions   Health Form   Consents   **Payment**   Confirm

**Selected Payment Method**

**Non-Electronic Payment**

If you have already paid the enrollment fee please do not send payment again. Larimer County does not approve memberships until the payment has been received either by credit card payments or by check. Please disregard any "automated" messages that are received directly from 4-H Online. The link for the payment fee is on our website. Please contact Pam if you need to make payment by check or cash. heeneyps@co.larimer.co.us

Change Payment Method

**Invoice**

Colorado 4-H Youth Development - Club Member Program Fee	\$15.00
Larimer - Club Member Program Fee	\$35.00
<b>Total:</b>	<b>\$50.00</b>

**Selected Payments:**

CHECK  
Owed to Larimer **\$50.00**

If you have already paid the enrollment fee please do not send payment again. Larimer County does not approve memberships until the payment has been received either by credit card payments or by check. Please disregard any "automated" messages that are received directly from 4-H Online. The link for the

**Step 4:** Under Selected Payment Method, it should read "Non-Electronic Payment."

Member List

Profile

Events

4-H

Enrollment

High Country Handiworkers 4-H Club, Larimer - Primary

**Selected Projects**

Shooting Sports (Archery) - High Country Handiworkers 4-H Club

Member Program Fee

Larimer - Club Member Program Fee	\$35.00
<b>Total:</b>	<b>\$50.00</b>

**Selected Payments:**

CHECK  
Owed to Larimer **\$50.00**

If you have already paid the enrollment fee please do not send payment again. Larimer County does not approve memberships until the payment has been received either by credit card payments or by check. Please disregard any "automated" messages that are received directly from 4-H Online. The link for the payment fee is on our website. Please contact Pam if you need to make payment by check or cash. heeneyps@co.larimer.co.us

Back   **Submit**

**Step 5:** Be sure to click "Submit" to send your enrollment to Larimer County 4-H for completion.